

The Vulcan Heavy Duty Super-Beam™ Load Cells

The highest quality load cells for on-board weighing applications.

Vulcan Heavy Duty Super-Beam™ Load Cells can be used in a wide variety of on-board weighing applications such as between truck frames and truck-mounted bodies, hoists, or under logging bunks. Stationary applications include: tank weighing, bin weighing, and heavy duty platform scales.

26" HEAVY DUTY SUPER-BEAM™



28" EXTRA HEAVY DUTY SUPER-BEAM™

KEY BENEFITS:

- Patented, torque canceling, double shear beam design
- Made from high strength, heat treated alloy steel
- Extremely reliable in the harshest environments
- Full twist compensation provides the highest accuracy
- Cad/Chromate plated for increased rust protection
- Powder coated for added corrosion resistance
- Completely sealed, internal electronics
- Easy bolt-in replacement, all load cells have matched outputs
- Reliable, military style connector
- INCREASE YOUR PROFIT BY MAXIMIZING EVERY LOAD

**QUALITY, DEPENDABILITY, SIMPLICITY FROM
THE WORLD LEADER IN ON-BOARD SCALES**



HEAVY DUTY SUPER-BEAM™ LOAD CELLS

LOAD CELLS FOR
ON-BOARD WEIGHING
APPLICATIONS

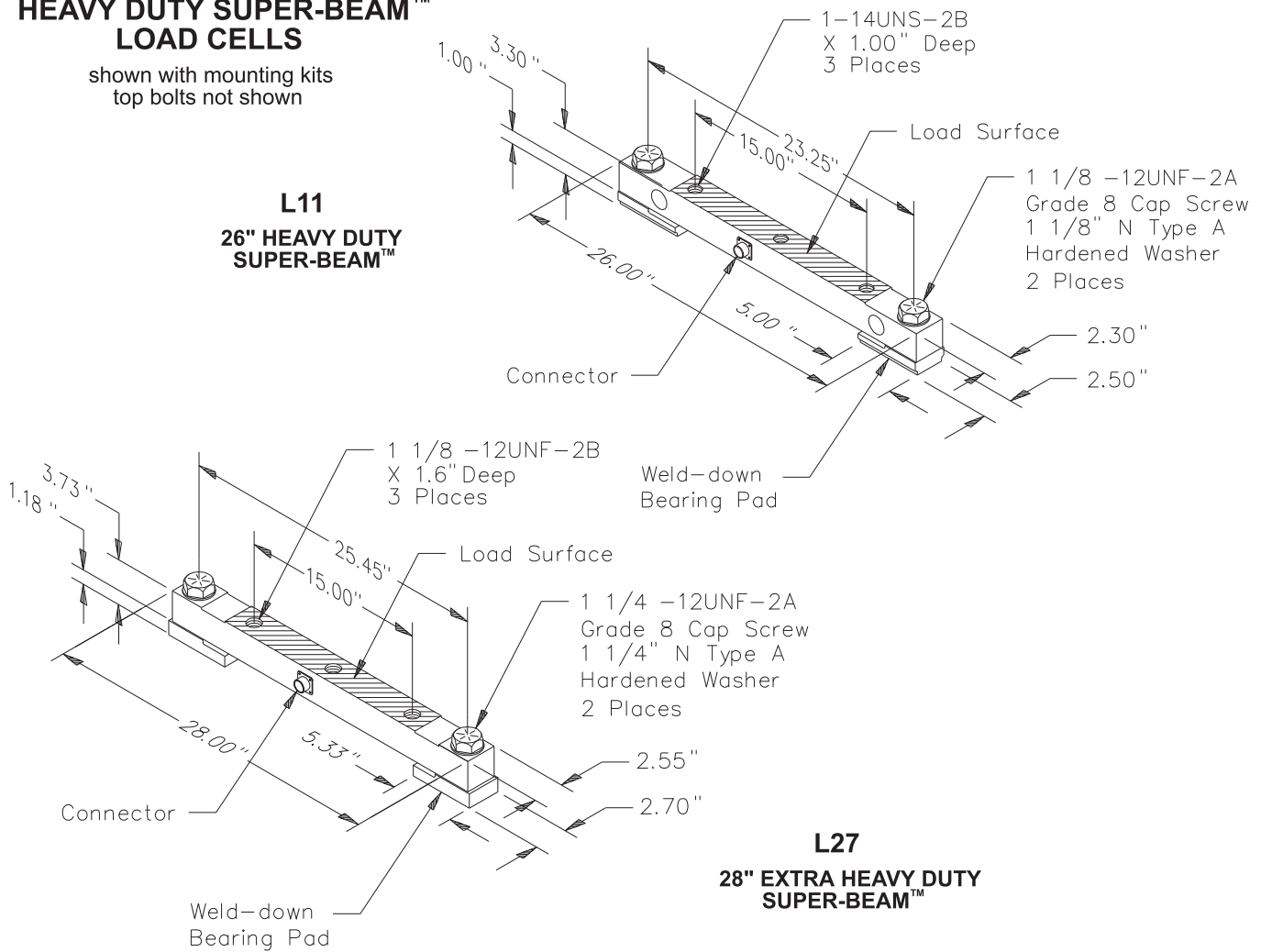
UNITED STATES
STRESS-TEK, INC.
5920 SOUTH 194th STREET
KENT WASHINGTON 98032
PHONE: 253 872-1910
800 237-0022
FAX: 253 872-9626
EMAIL : info@vulcanscales.com
www.vulcanscales.com

CANADA
STRESS-TEK, INC.
UNIT #11
1642 LANGAN AVENUE
PORT COQUITLAM B.C.
V3C 1K5
PHONE: 800 663-0854

HEAVY DUTY SUPER-BEAM™ LOAD CELLS

shown with mounting kits
top bolts not shown

L11 26" HEAVY DUTY SUPER-BEAM™



L27 28" EXTRA HEAVY DUTY SUPER-BEAM™

Typical systems consist of either four or six Heavy Duty or Extra Heavy Duty Super-Beams™ and Vulcan Mounting Kits.

SPECIFICATION : 26" HEAVY DUTY

STATIC CAPACITY: 50,000 lb vertical load
DYNAMIC CAPACITY: 25,000 lb vertical load
SAFE OVERLOAD: 300% dynamic capacity
ACCURACY: Typical system error less than .5% full scale
MATERIAL: Customized 4340 steel, heat treated for optimum strength
OUTPUT: 1mV/V at 25,000 lbs
FINISH: Vulcan load cells are cad/chromate plated for increased rust protection

SPECIFICATION : 28" EXTRA HEAVY DUTY

STATIC CAPACITY: 75,000 lb vertical load
DYNAMIC CAPACITY: 50,000 lb vertical load
SAFE OVERLOAD: 200% dynamic capacity
ACCURACY: Typical system error less than 1% full scale
MATERIAL: Customized 4340 steel, heat treated for optimum strength
OUTPUT: 1.68mV/V at 50,000 lb
FINISH: Vulcan load cells are cad/chromate plated for increased rust protection

REPRESENTED BY: