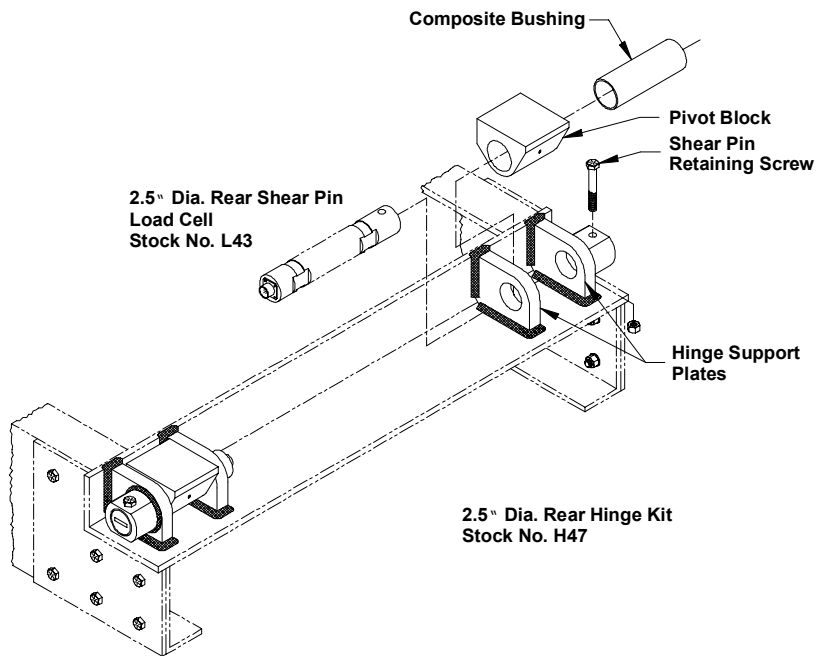


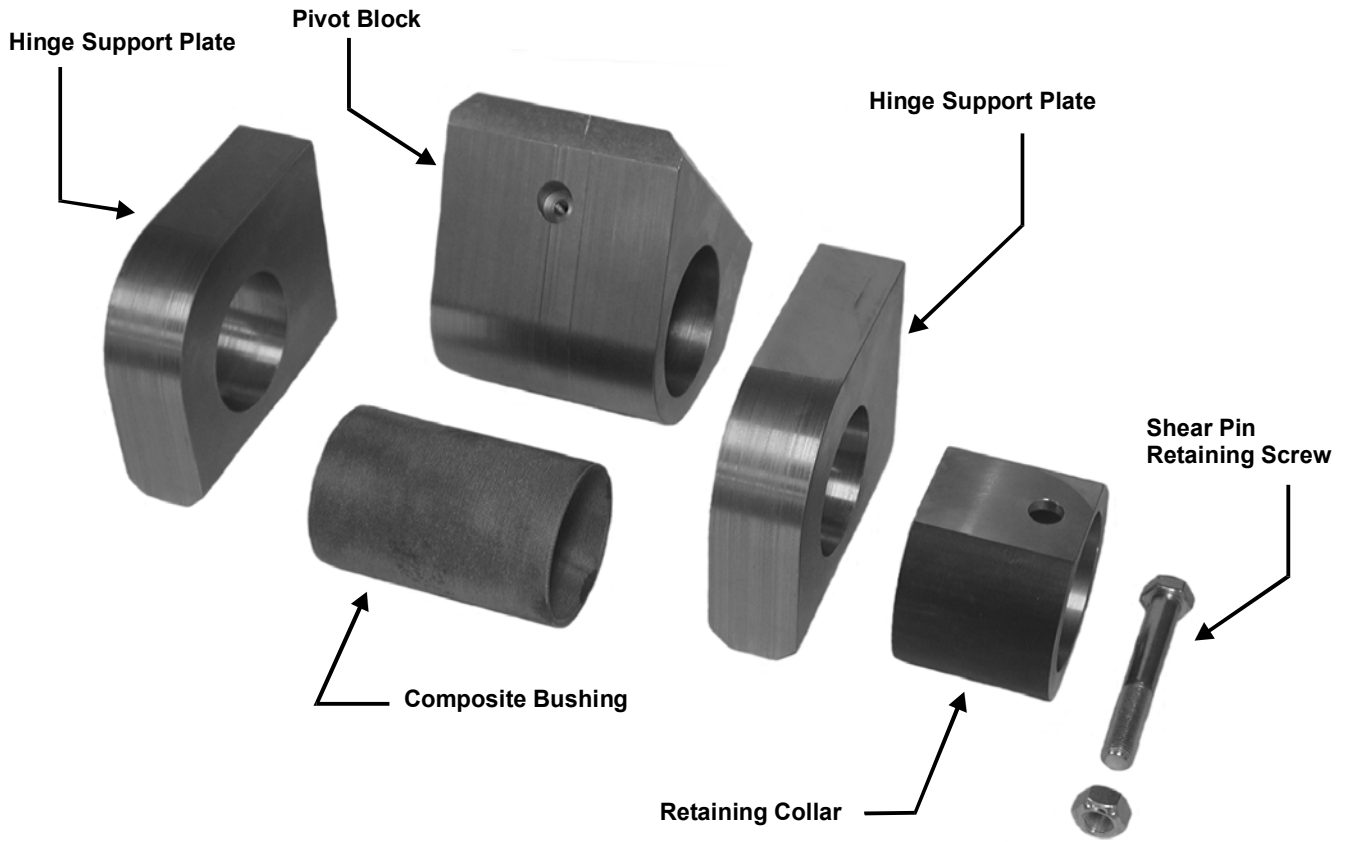


2.5" DIA. REAR HINGE INSTALLATION INSTRUCTIONS



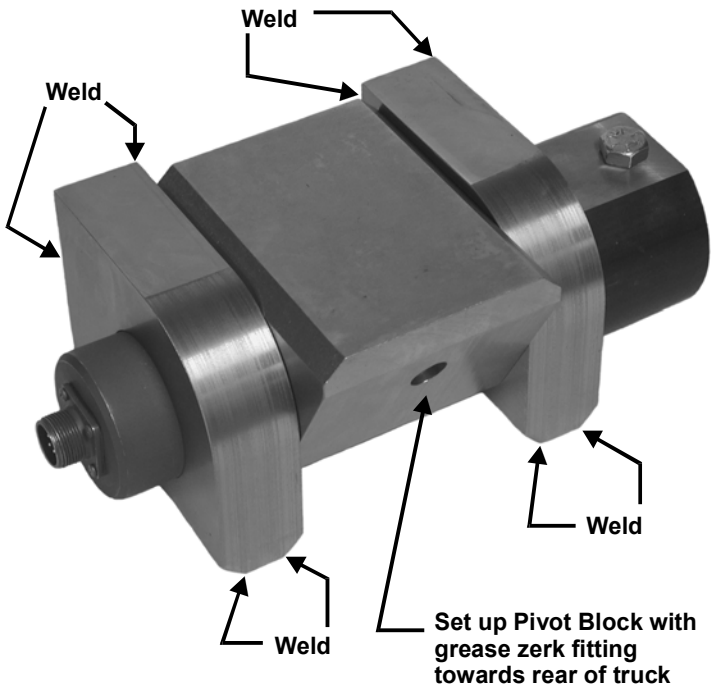
HINGE KIT PARTS

Stock No. H47

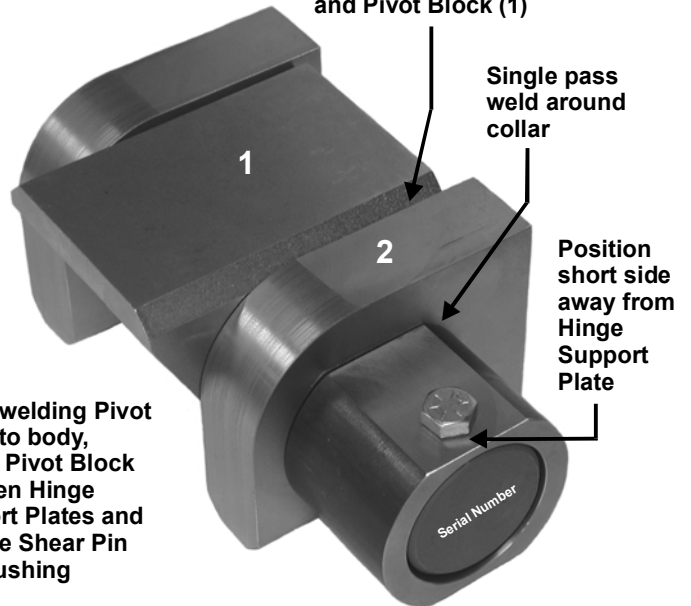


INSTALLATION INSTRUCTIONS

Weld 3, 3/8" passes on both sides of Hinge Support Plates



Before tacking Hinge Support Plate in place, place 1/16" shim in one place between Hinge Support Plate (2) and Pivot Block (1)



When welding Pivot Block to body, center Pivot Block between Hinge Support Plates and remove Shear Pin and Bushing

Flats on Retaining Collar MUST be horizontal (level)

When installing Shear Pin Load Cell, position so Serial Number can be read RIGHT SIDE UP