



## TECHNICAL BULLETIN

### 1-800-237-0022

---

#### Stock No. H04 - 15" LOAD CELL PILLOW BLOCK KIT, 2"

PART NO. 59-30004-001

---

#### PURPOSE:

The VULCAN Pillow Block Kit allows for on-board weighing in hinged point applications. The Pillow Block Kit mounts to the VULCAN load Cell (Stock No. L01). Specific applications include Roll-Off Vehicles, Rear and Front Loaders and any pivoting dump body.

#### SPECIFICATIONS:

- Shaft Size: 2" Diameter
- Pillow Block Material: Cold finished steel with corrosion resistant plating
- Fasteners: 1.0" Diameter x 5-1/4" Long, Grade 8, Hex Cap Screw
- Screw Lock: Steel
- Lubricant: Pillow Block is equipped with an easily accessible zerk fitting for applying grease
- Kit Includes:
 

(1) Pillow Block	Part No. 52-10542-001
(2) Cap Screws	Part No. 30-14021-504
(1) Screw Lock	Part No. 52-30020-001
(1) Zerk Fitting	Part No. 49-10052-001



**TECHNICAL BULLETIN**  
**1-800-237-0022**

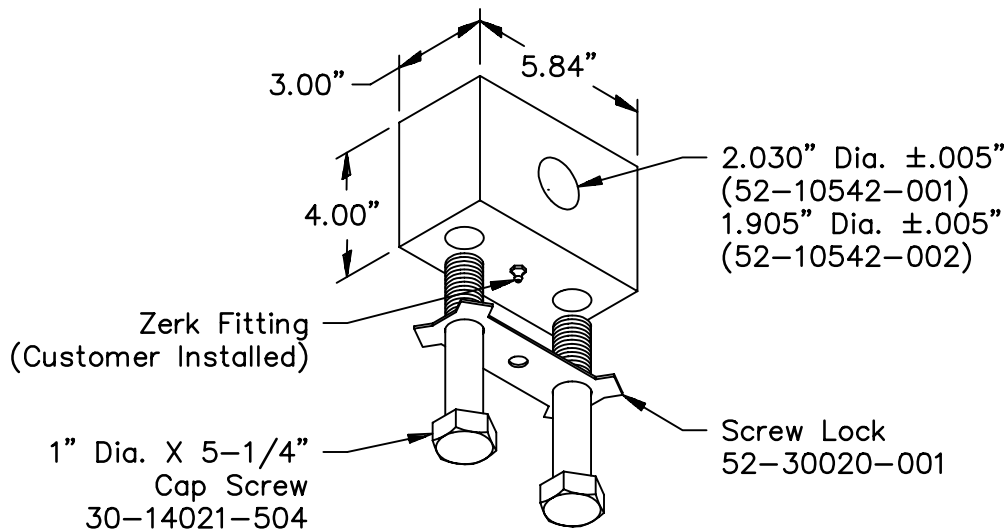


FIG 133-A

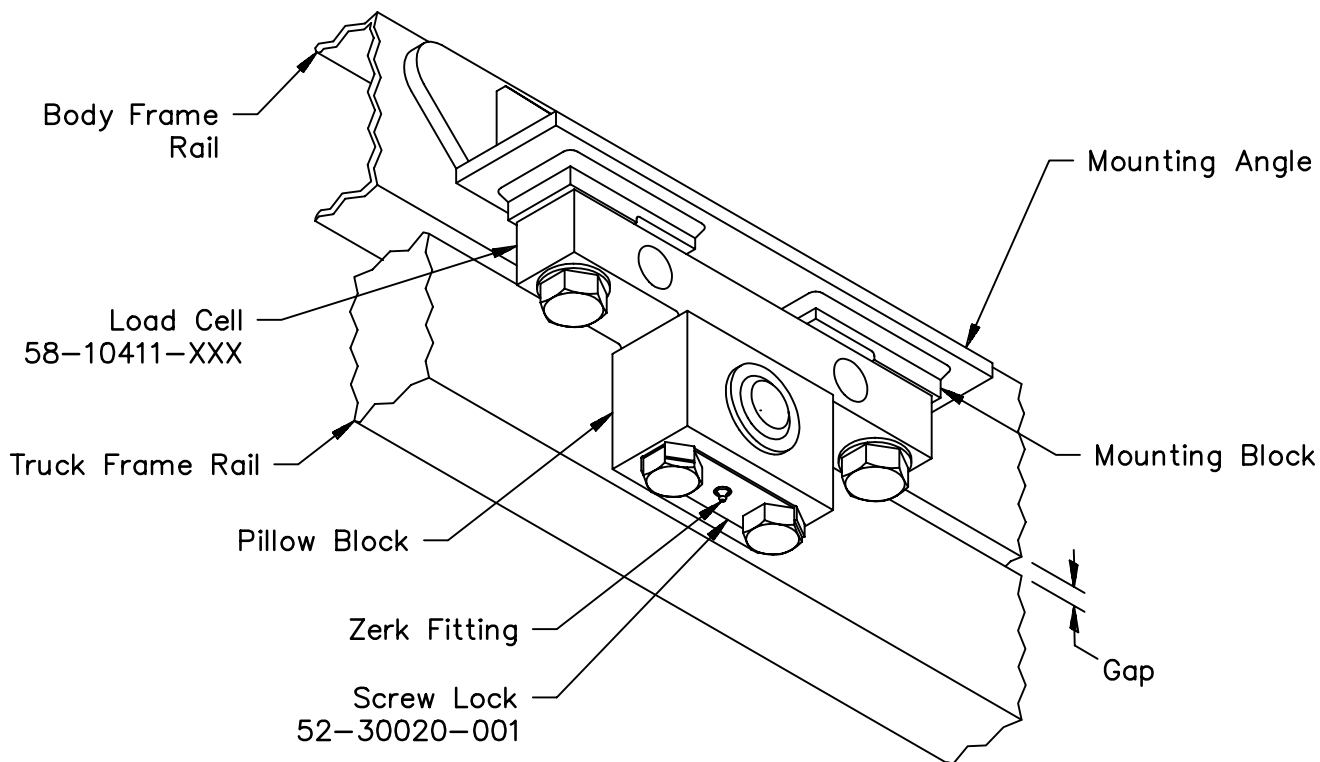


FIG 133-B



## TECHNICAL BULLETIN

### 1-800-237-0022

#### INSTALLATION:

1. Thoroughly clean both the load cell and Pillow Block mounting surfaces.
2. Position the load cell mounting angle so that when the shaft / pin is mated in the Pillow Block, there is a gap between the body frame rail and truck frame rail as shown in FIG. 133-B. Do not shim between the Pillow Block and the load cell or between the mounting block and load cell.
3. Apply "Never Seize" to both the 1.0" Diameter Cap Screws before installing.
4. Tighten the 1.0" Diameter Cap Screws to 650 - 890 lb-ft
5. Generously grease the circular housing wall of the Pillow Block before permanently installing the shaft or pin.
6. Paint the Pillow Block and the load cell assembly **after** it is completely put together and all fasteners are tightened to specific torque values. Ensure the zerk fitting is not clogged with paint.
7. Periodically grease the Pillow Block via the zerk fitting. Check all scale system cap screw torque values periodically.

NOTE: **DO NOT** weld the Pillow Block to the load cell.