



## TECHNICAL BULLETIN

### 1-800-237-0022

**Stock No. H16 - 26" LOAD CELL SLIDER KIT, HOLLAND LONG SLIDE BRACKET**  
PART NO. 53-10515-001

#### CONCEPT:

This slider bracket is designed to fit under Holland Fifth Wheels, replacing the standard slider. This makes the installation easier and helps keep from adding substantially to trailer height.

#### APPLICATION:

Fits all later model Holland slider plates and is specifically designed for Vulcan 26" load cells (L08, L09, L11) using optional quick change straps.

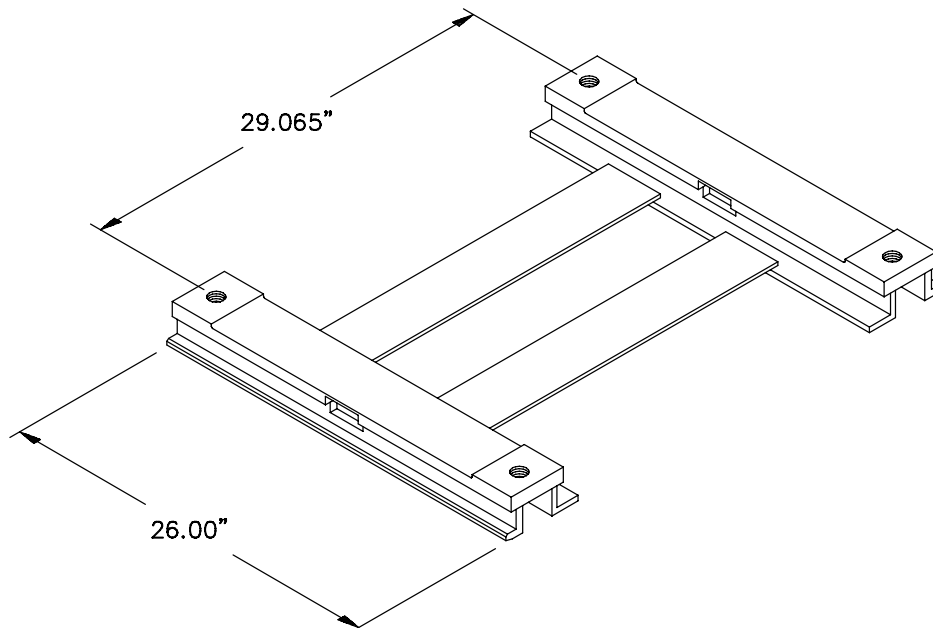


FIG 130-A



## TECHNICAL BULLETIN

### 1-800-237-0022

#### SPECIFICATIONS:

- Capacity: 40,000 lb vertical  
150,000 lb drawbar pull
- Safe Overload: 300% vertical capacity

NOTE: Plungers and release mechanisms are not sold with slider bracket assembly and must be obtained from a Holland dealer. For retrofits, the existing release mechanism can be used. Stress-Tek, Inc. bracket assembly is designed to fit the plunger style introduced in May, 1982. All earlier models must convert to XA-0372A plunger style.

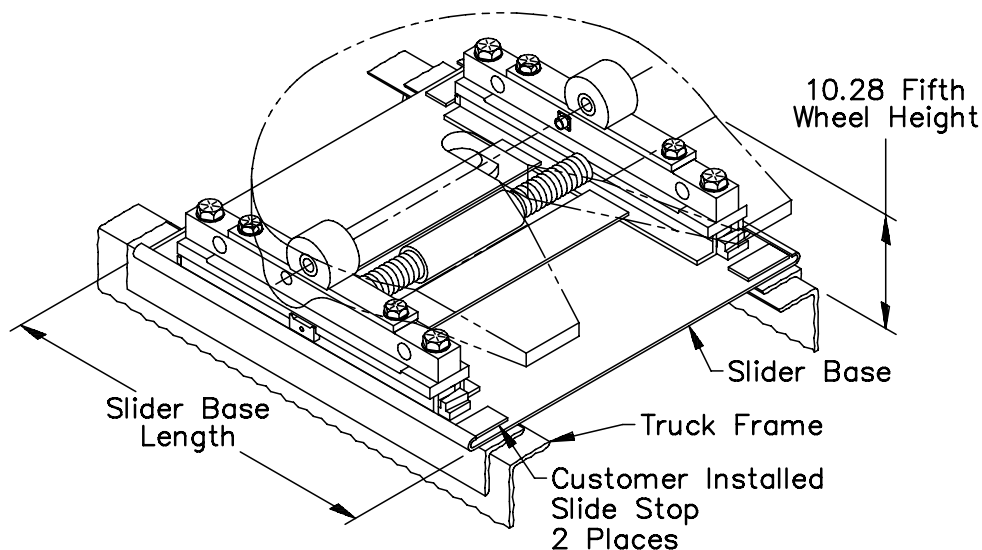


FIG 130-B



## TECHNICAL BULLETIN

### 1-800-237-0022

#### INSTALLATION:

##### Step 1 - REMOVING EXISTING SLIDING FIFTH WHEEL

Carefully remove the slide stops at the back end of the slide tracks. Disengage lock pins and remove fifth wheel. Extend the plungers and slide the bracket assembly off the ends of the tracks. If the release mechanism is air operated, check the hose length to determine if it needs to be removed before or after sliding the bracket assembly off the tracks. See FIG. 130-C.

##### Step 2 - REMOVE RELEASE MECHANISM

To remove the plungers, the springs must be compressed and held to remove the pins that retain the plungers to the release mechanism. Holland has a tool available (Part No. TF-TLN-2500) designed exclusively for removing and installing springs, retainers and pins for the slide release mechanism.

##### Step 3 - INSTALLING BRACKET / LOAD CELL ASSEMBLY

For new tractors, a slide base plate of the desired length must be installed. Location and installation procedures should follow guidelines recommended by the Holland Hitch Co.

To install the bracket / load cell assembly follow the preceding steps in **reverse** order.

Lubricate the lock pins before reinstalling and tighten the 1 1/8" dia. mounting cap screw to 1000 - 1800 lb-ft. It is the responsibility of the installer to ensure that the slide stops are properly installed after reassembly of the fifth wheel. Locate rear slide stops under the curled edge of the slide base plate and approximately 1/4" to 1/2" from the rear edge of the plate as shown in FIG 130-D. Any paint, grease, or other debris should be removed from weld area prior to welding. Clamp slide stops in place and weld using a 1/4" fillet. Use a low hydrogen welding process following AWS codes is recommended. Take precautions to ensure the tractor electrical system is not damaged during welding.



## TECHNICAL BULLETIN

### 1-800-237-0022

#### Step 4 - WIRING AND OPERATION

Secure Vulcoder to tractor and route the black cables to the load cell and the orange cable to the meter in the cab. Route the cables so they will not be damaged by road debris and allow for travel in the sliding bracket assembly. For additional electronic installation notes and operation procedures, see the VULCAN Owner's Manual or the Vulcan Operation and Maintenance Manual.

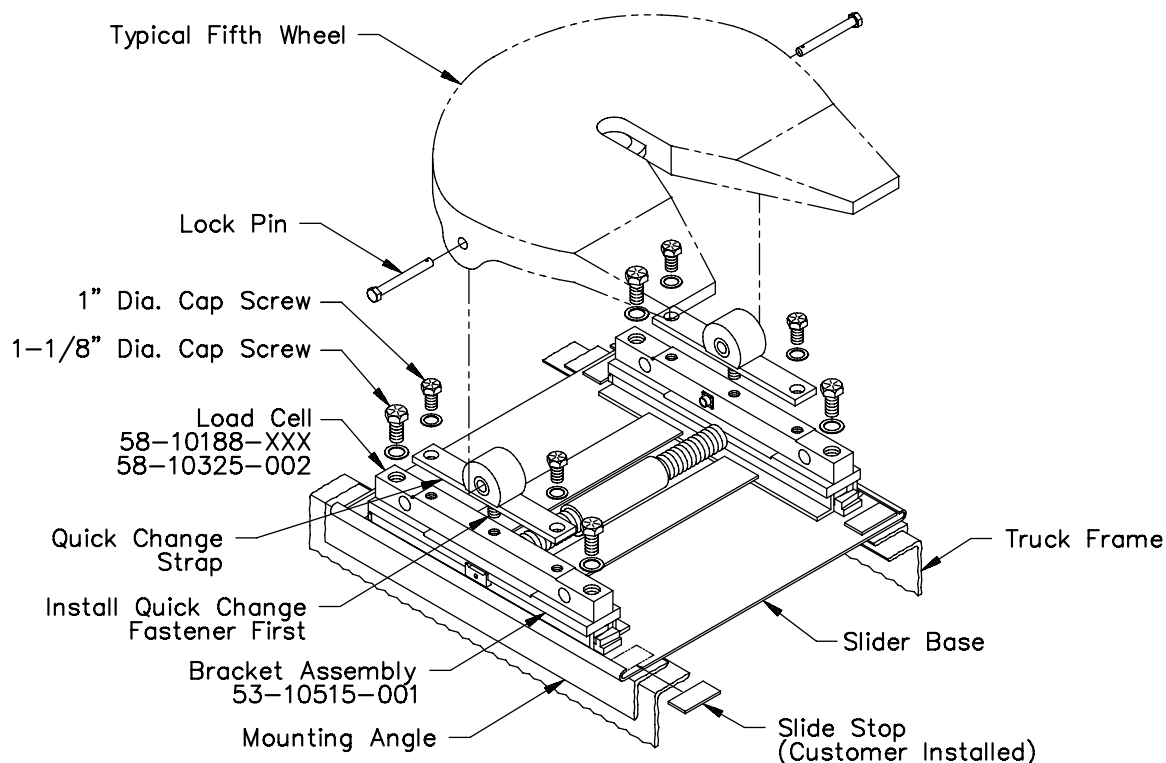


FIG 130-C

**TECHNICAL BULLETIN**  
**1-800-237-0022**

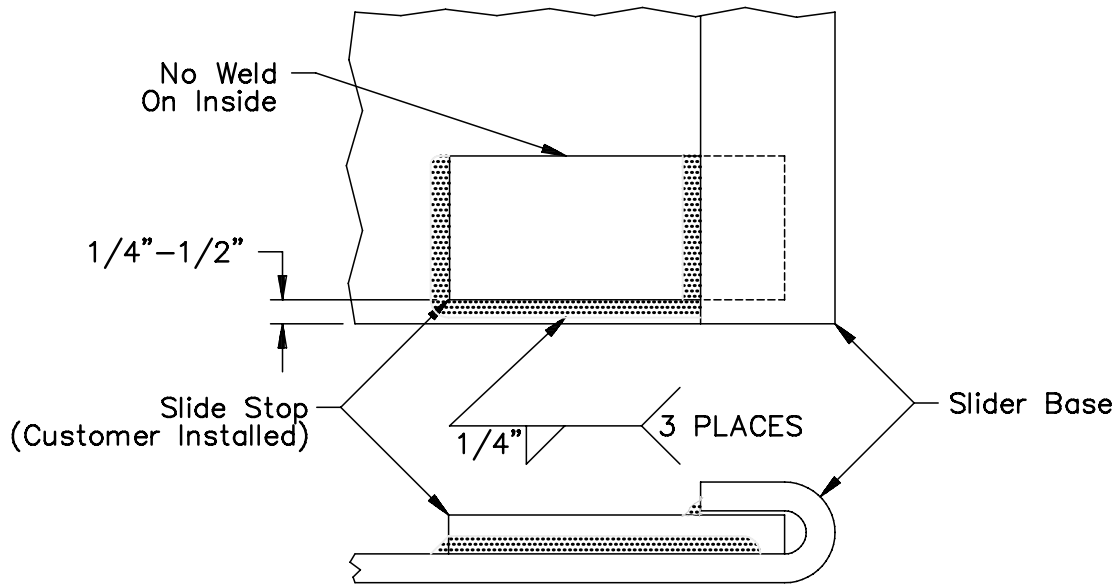


FIG 130-D

**Step 5 - INSPECTION AND LUBRICATION**

Make sure the plungers on the sliding bracket engage properly into the rack. Proper adjustment of the sliding bracket locking plungers be performed at installation and maintained at regular intervals by use of the adjusting bolts provided on both sides. Adjustment is required for proper operation, load transfer and distribution. Follow procedures specified by the Holland Hitch Co.

Apply lubricant to the bearing surface on the load cells through the grease fitting on the side of the fifth wheel plate. The plate must be lifted up slightly to relieve weight while applying lubricant. Apply diesel or other lubricant on the rack and slide path of the bracket assembly.

Load cell mounting cap screw must be checked periodically for proper torque.