



## TECHNICAL BULLETIN

1-800-237-0022

### Stock No. H14 - QUICK CHANGE STRAP, SIMPLEX 5TH WHEEL

PART NO. 59-30002-001

### Stock No. H15 - QUICK CHANGE STRAP, HOLLAND 5TH WHEEL

PART NO. 59-30003-001

#### CONCEPT:

These straps are designed to adapt standard 26" Vulcan load cells to Holland or Simplex fifth wheel plates.

#### APPLICATION:

Stress-Tek, Inc. manufactures two types of quick change straps. An installation requires two quick change straps. The Simplex strap fits all Simplex II standard capacity fifth wheel plates. The Holland strap fits all Holland 2000, 3500, and 3600 series fifth wheel plates.

#### SPECIFICATIONS:

- All quick change straps fit the following 26" Double Shear Beam (DSB) Load Cells: L08 (side connector), L09 (twist compensated), L11 (heavy duty), and L18 (3 top holes, powder coated).
- All quick change straps come with a captive center tie down cap screw and two end cap screws with hardened washers supplied by Stress-Tek, Inc.

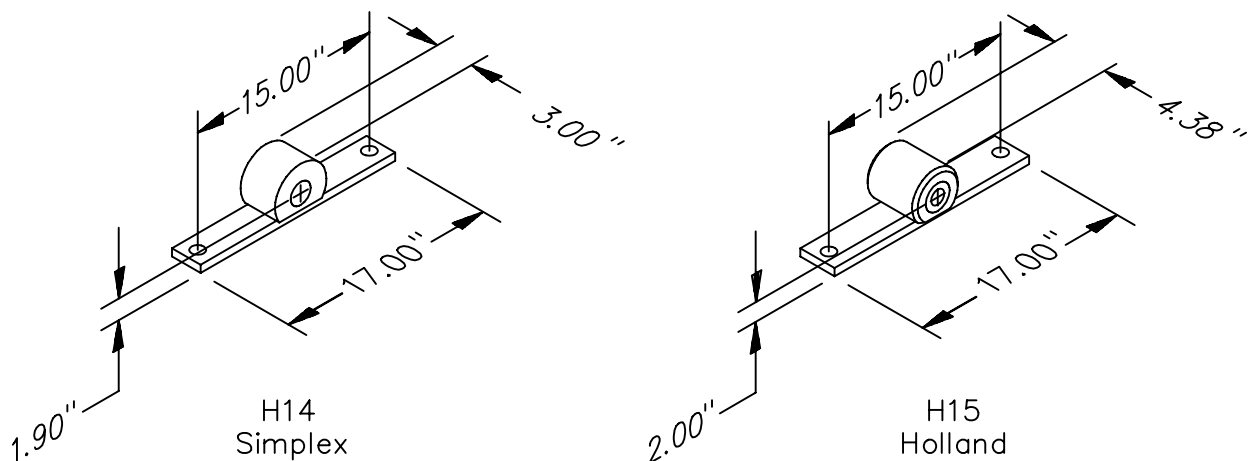


FIG. 124-A



## TECHNICAL BULLETIN

### 1-800-237-0022

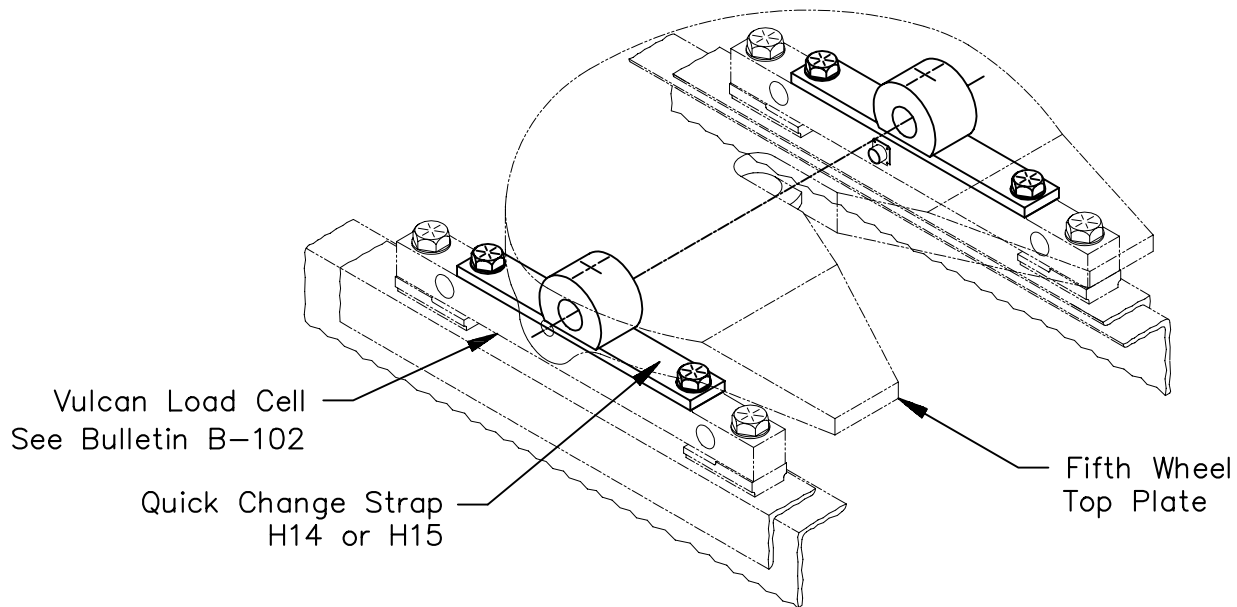


FIG 124-B

#### INSTALLATION:

1. Position the special machined cap screw (identified by its shorted head height) through the opening in the knob, and insert screw threads through the center hole in the quick change strap base. **The captive center fastener must be installed for safe operation of the quick change strap. See figure 124-C.**
2. Insert the bushing into the Holland quick change strap knob. The Simplex quick change strap does not require a bushing.
3. Engage the captive center fastener installed in the quick change strap to the center tapped hole in the load cell. Use the quick change strap base to spin the captive center fastener threads into the load cell. Tighten the captive center fastener as much as possible while aligning the quick change strap end cap screw holes with the load cell cap screw holes to obtain the final tightened position. In maintaining the alignment of the cap screw holes, the captive center fastener may be slightly less than tight.



**TECHNICAL BULLETIN**  
**1-800-237-0022**

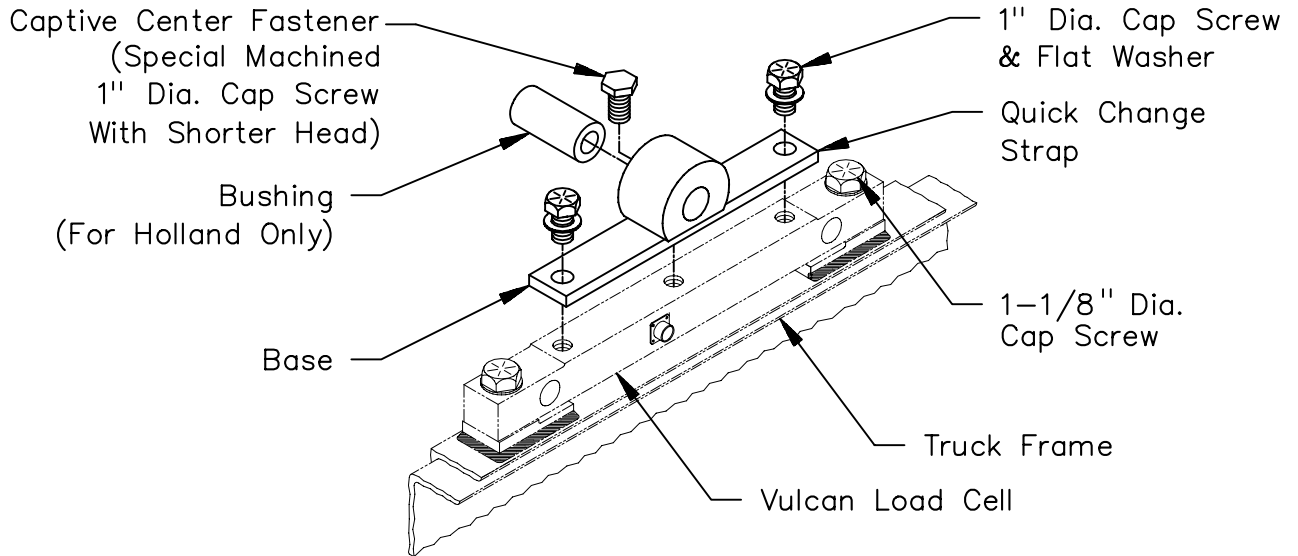


FIG. 124-C

4. Install the 1" diameter cap screws and washers on each end of the quick change strap. Torque the quick change strap fasteners and load cell end fasteners to the following values:

Diameter	1"	1-1/8"
SAE J429 - Grade 8	650-890 lb-ft	1000-1400 lb-ft

**Note:** Check all load cell and quick change strap torque values periodically.