

The Vulcan Super-Beam™ Load Cell

The highest quality load cells for on-board weighing applications.

Super-Beams™ can be used in a wide variety of on-board weighing applications such as; between truck frames and truck-mounted bodies, hoists, or under logging bunks. Stationary applications include: tank or bin weighing and heavy duty platform scales.



26" SIDE CONNECTOR
SUPER-BEAM™



15" SIDE CONNECTOR
SUPER-BEAM™



15" END CONNECTOR
SUPER-BEAM™

KEY BENEFITS:

- Patented, torque canceling, double shear beam design
- Made from high strength, heat treated alloy steel
- Extremely reliable in the harshest environments
- Full twist compensation provides the highest accuracy
- Cad/Chromate plated for increased rust protection
- Completely sealed, internal electronics
- Much stronger and less flex than bending beam load cells
- Easy bolt-in replacement, all load cells have matched outputs
- Reliable, military style connector
- INCREASE YOUR PROFIT BY MAXIMIZING EVERY LOAD

**QUALITY, DEPENDABILITY, SIMPLICITY FROM
THE WORLD LEADER IN ON-BOARD SCALES**



SUPER-BEAM™ LOAD CELL

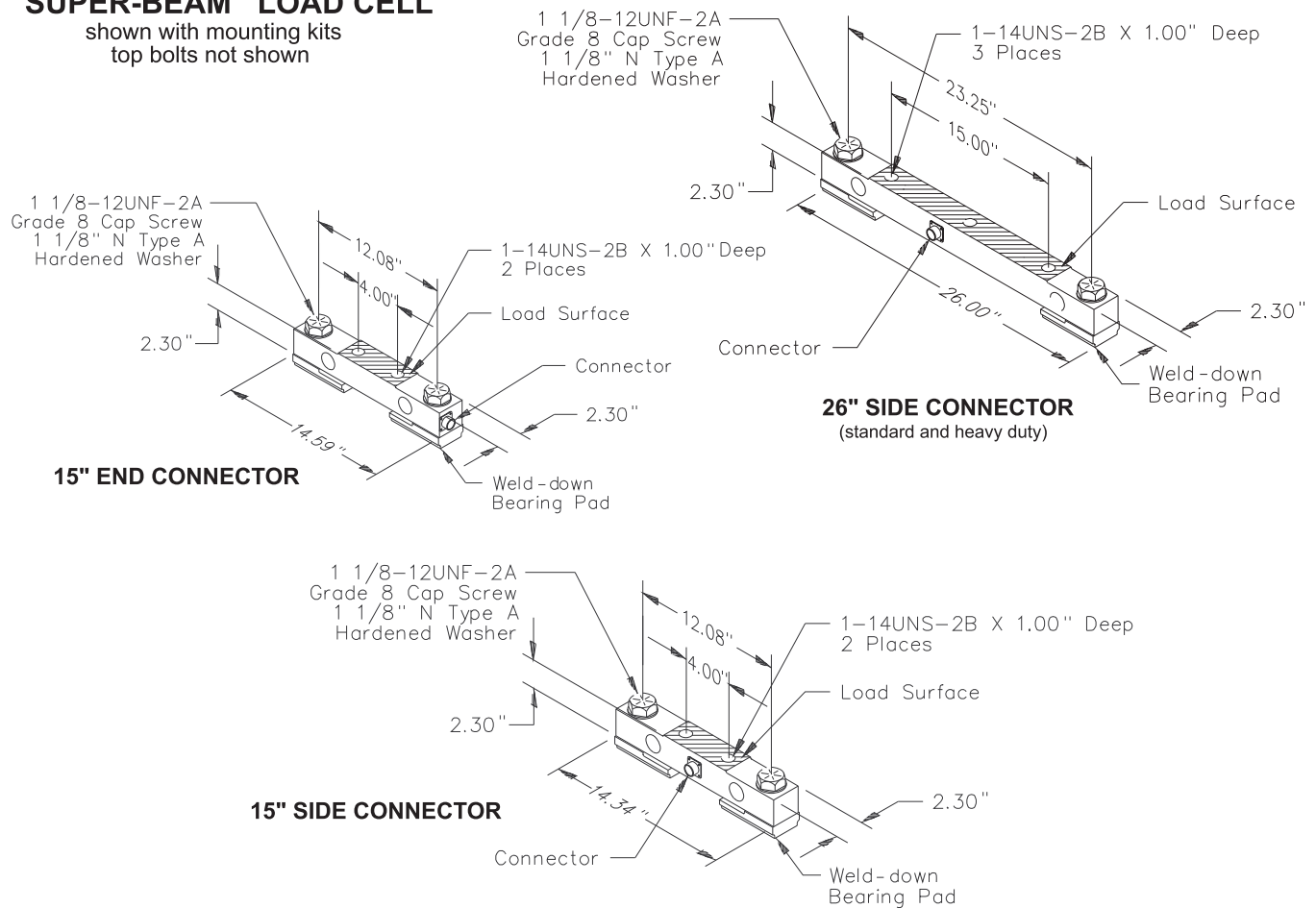
**LOAD CELL FOR
ON-BOARD WEIGHING
APPLICATIONS**

UNITED STATES
STRESS-TEK, INC.
5920 SOUTH 194th STREET
KENT WASHINGTON 98032
PHONE: 253 872-1910
800 237-0022
FAX: 253 872-9626
EMAIL : info@vulcanscales.com
www.vulcanscales.com

CANADA
STRESS-TEK, INC.
UNIT #11
1642 LANGAN AVENUE
PORT COQUITLAM B.C.
V3C 1K5
PHONE: 800 663-0854

SUPER-BEAM™ LOAD CELL

shown with mounting kits
top bolts not shown



Typical systems consist of either four or six Super-Beam™ Load Cells and Vulcan Mounting Kits. Vulcan 26" Super-Beam™ Load Cells will accommodate Simplex and Holland quick change strap kits.

SPECIFICATION :

26" SIDE CONNECTOR

STATIC CAPACITY: 25,000 lbs vertical load
50,000 lbs vertical load (Heavy Duty only)

DYNAMIC CAPACITY: 12,500 lbs vertical load
25,000 lbs vertical load (Heavy Duty only)

SAFE OVERLOAD: 300% dynamic capacity

ACCURACY: Typical system error less than
.5% full scale

MATERIAL: Customized 4340 steel, heat treated
for optimum strength

OUTPUT: .75mV/V at 12,500 lbs
1mV/V at 25,000 lbs (Heavy Duty only)

FINISH: Vulcan load cells are cad/chromate
plated for increased rust protection

SPECIFICATION :

15" END CONNECTOR

STATIC CAPACITY: 30,000 lbs vertical load

DYNAMIC CAPACITY: 15,000 lbs vertical load

SAFE OVERLOAD: 300% dynamic capacity

ACCURACY: Typical system error less than
.5% full scale

MATERIAL: Customized 4340 steel, heat treated
for optimum strength

OUTPUT: .9mV/V at 15,000 lbs

FINISH: Vulcan load cells are cad/chromate
plated for increased rust protection

SPECIFICATION :

15" SIDE CONNECTOR

STATIC CAPACITY: 30,000 lbs vertical load

DYNAMIC CAPACITY: 15,000 lbs vertical load

SAFE OVERLOAD: 300% dynamic capacity

ACCURACY: Typical system error less than
.5% full scale

MATERIAL: Customized 4340 steel, heat treated
for optimum strength

OUTPUT: .9mV/V at 15,000 lbs

FINISH: Vulcan load cells are cad/chromate
plated for increased rust protection

REPRESENTED BY: