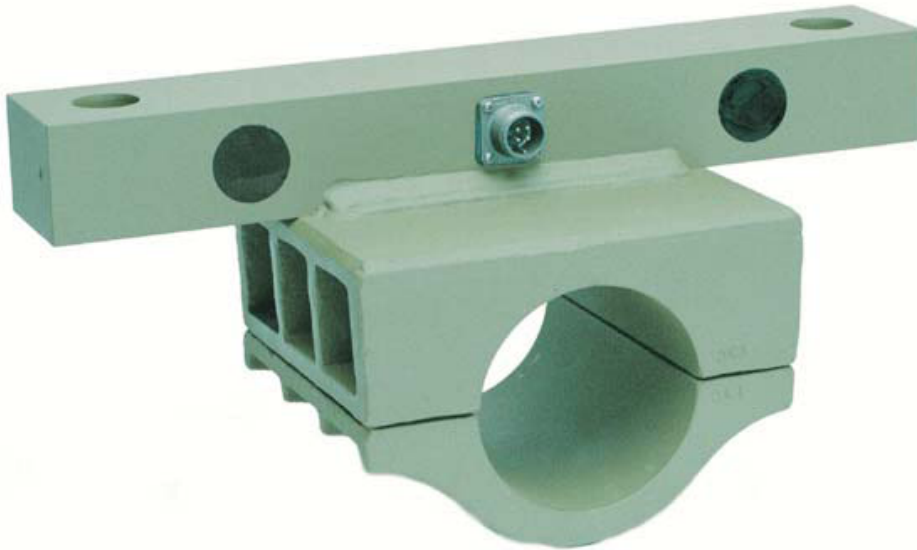


# The Vulcan Single Point Load Cell

The highest quality single point load cells for on-board weighing applications.

These load cells are designed to fit a variety of trailers that use single point suspensions with 4" trunion tubes. The load cells provide immediate weight information without adding substantially to trailer height or weight.



**SINGLE POINT  
DOUBLE SHEAR BEAM  
LOAD CELL**

## KEY BENEFITS:

- Patented, double shear beam design for the highest reliability
- Extremely accurate and reliable in the harshest environments
- Integral trunnion clamp
- Cad/Chromate plated for increased rust protection
- Completely sealed, internal electronics
- Bolt-on design for easy installation and maintenance
- Reliable, military style connector
- INCREASE YOUR PROFIT BY MAXIMIZING EVERY LOAD

**QUALITY, DEPENDABILITY, SIMPLICITY FROM  
THE WORLD LEADER IN ON-BOARD SCALES**



## **SINGLE POINT LOAD CELL**

**LOAD CELL FOR  
ON-BOARD WEIGHING  
APPLICATIONS**

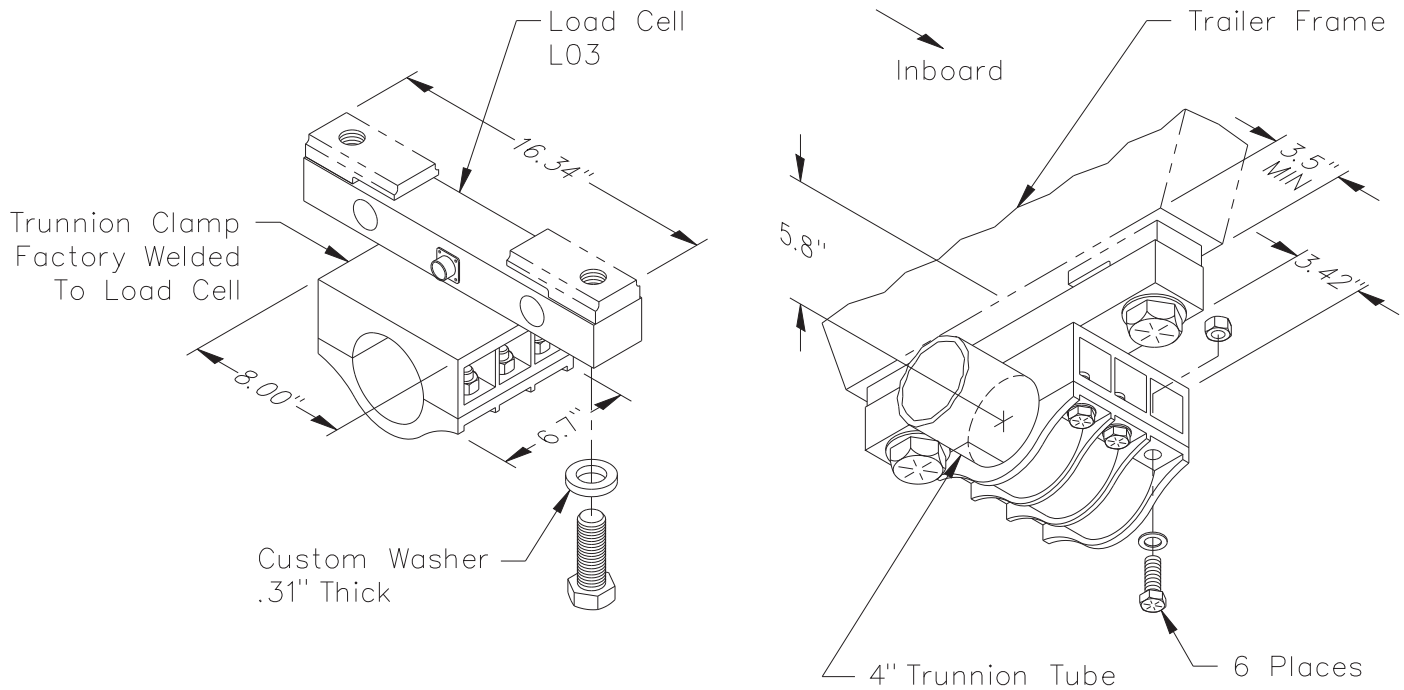
### **UNITED STATES**

STRESS-TEK, INC.  
5920 SOUTH 194th STREET  
KENT WASHINGTON 98032  
PHONE: 253 872-1910  
800 237-0022  
FAX: 253 872-9626  
EMAIL : [info@vulcanscales.com](mailto:info@vulcanscales.com)  
[www.vulcanscales.com](http://www.vulcanscales.com)

### **CANADA**

STRESS-TEK, INC.  
UNIT #11  
1642 LANGAN AVENUE  
PORT COQUITLAM B.C.  
V3C 1K5  
PHONE: 800 663-0854

## SINGLE POINT LOAD CELL



A system consists of two Vulcan Single Point Double Shear Beam Load Cells and two Single Point Mounting Kits containing load cell mounting bolts and weld-down bearing pads.

### SPECIFICATION:

**CAPACITY:** 40,000 lbs vertical load per system

**ACCURACY:** Typical system error less than  
.5% full scale

**MATERIAL:** High strength alloy steel

**OUTPUT:** 1.17mV/V at 20,000 lbs  
(each load cell)

**FINISH:** Vulcan load cells are cad/chromate  
plated for increased rust protection

**Note:** Required for each trunion clamp are six 5/8"-18 UNF x 2" long, Grade 8 hex cap screws, six 5/8"-18 UNF Grade 8 equivalent steel lock nuts, and six 5/8" hardened steel washers.

---

### REPRESENTED BY: