

# The Vulcan Shear Pin Load Cells

The highest quality shear pins for your on-board weighing and custom applications.

The Vulcan Shear Pin Load Cells can be used in a wide variety of on-board weighing and general industry applications. On-board weighing applications include using the shear pins in the rear hinge assembly of dump trucks, roll-offs and hooklifts.



SHEAR PIN LOAD CELLS

## KEY FEATURES AND BENEFITS:

- Designed for easy installation and low maintenance
- Flexible - multiple shear pin options for different applications
- Optional hinge assemblies suitable for new installations or retrofits
- Hinge assemblies feature composite bushings for maximum durability, accuracy, and load cell life
- Accurate and reliable in harsh environments
- Made from high strength, heat treated alloy steel
- Reliable, double-sealed, military style connectors
- Excellent for both on-road and off-road applications
- INCREASE YOUR PROFIT BY MAXIMIZING EVERY LOAD

**ALSO AVAILABLE:** Retaining collars, and partial or full rear hinge assemblies for dump truck, roll-off and hook-lift applications. Hinge assemblies feature composite bushings that provide maximum accuracy, extend load pin life, and reduce maintenance requirements.

PARTIAL REAR HINGE ASSEMBLY



FULL REAR HINGE ASSEMBLY



**QUALITY, DEPENDABILITY, SIMPLICITY FROM  
THE WORLD LEADER IN ON-BOARD SCALES**



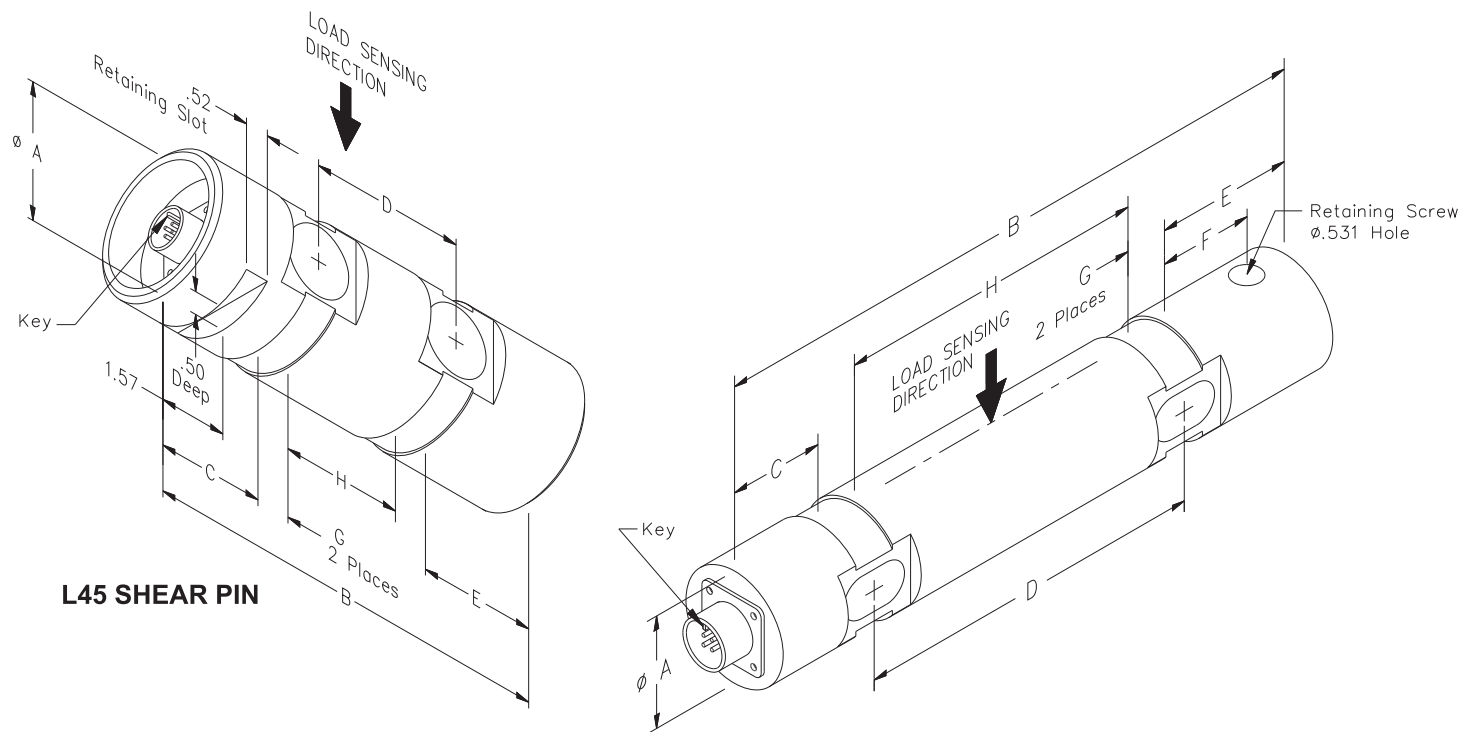
## SHEAR PIN LOAD CELLS

SHEAR PIN LOAD CELLS  
FOR ON-BOARD WEIGHING  
AND OTHER APPLICATIONS

**UNITED STATES**  
STRESS-TEK, INC.  
5920 SOUTH 194th STREET  
KENT WASHINGTON 98032  
PHONE: 253 872-1910  
800 237-0022  
FAX: 253 872-9626  
EMAIL : [info@vulcanscales.com](mailto:info@vulcanscales.com)  
[www.vulcanscales.com](http://www.vulcanscales.com)

**CANADA**  
STRESS-TEK, INC.  
UNIT #11  
1642 LANGAN AVENUE  
PORT COQUITLAM B.C.  
V3C 1K5  
PHONE: 800 663-0854

# SHEAR PIN LOAD CELL



L45 SHEAR PIN

SHEAR PIN	A	B	C	D	E	F	G	H
L25	2.00	11.5	1.81	6.38	2.56	1.69	0.75	5.63
L26	2.00	13.0	1.81	7.87	2.56	1.69	0.75	7.13
L34	2.00	8.00	1.81	2.90	2.56	1.74	0.75	2.13
L43	2.50	10.88	2.14	4.28	3.71	3.01	0.75	3.53
L44	1.44	7.00	1.75	2.13	2.50	1.88	0.63	1.49
L45	3.00	9.25	2.47	3.44	2.59	n/a	0.75	2.69

## SPECIFICATION:

- DIMENSIONS:** See dimension information above

**CAPACITY:** Application dependent. Please refer to appropriate Application Note or refer to factory

**MATERIAL:** Standard material is high strength, heat treated, alloy steel. Stainless steel optional for custom applications
- CONNECTORS:** Military grade with dual environmental seals

**ACCURACY:** System accuracy typically within 1% of GVW

## REPRESENTED BY: