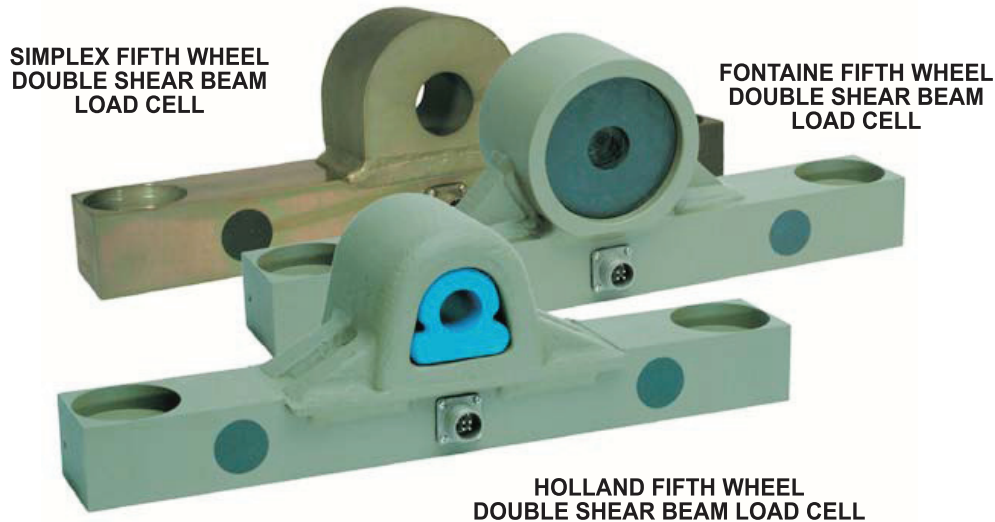


# The Vulcan Fifth Wheel Load Cell

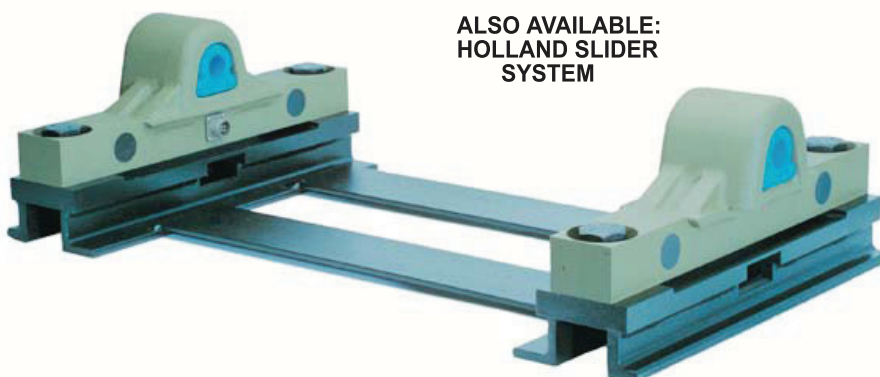
The highest quality fifth wheel load cells for on-board weighing applications.

These load cells are designed to fit under Holland, Fontaine, or Simplex fifth wheel plates, replacing the standard risers or slide brackets. The load cells provide immediate weight information without adding substantially to the trailer height or the tractor weight.



## KEY BENEFITS:

- Patented, double shear beam design
- Made from high strength alloy steel
- Extremely accurate and reliable in the harshest environments
- Cad/Chromate plated for increased rust protection
- Designed specifically for fixed or slider applications
- Completely sealed, internal electronics
- Bolt-on design for easy installation and maintenance
- Reliable, military style connector
- INCREASE YOUR PROFIT BY MAXIMIZING EVERY LOAD



ALSO AVAILABLE:  
HOLLAND SLIDER  
SYSTEM

**QUALITY, DEPENDABILITY, SIMPLICITY FROM  
THE WORLD LEADER IN ON-BOARD SCALES**



## FIFTH WHEEL LOAD CELL

LOAD CELL FOR  
ON-BOARD WEIGHING  
APPLICATIONS

### UNITED STATES

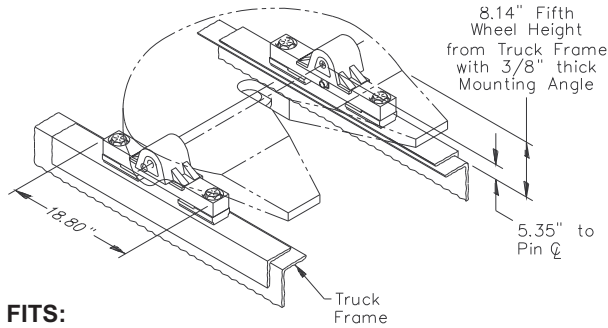
STRESS-TEK, INC.  
5920 SOUTH 194th STREET  
KENT WASHINGTON 98032  
PHONE: 253 872-1910  
800 237-0022  
FAX: 253 872-9626  
EMAIL : [info@vulcanscales.com](mailto:info@vulcanscales.com)  
[www.vulcanscales.com](http://www.vulcanscales.com)

### CANADA

STRESS-TEK, INC.  
UNIT #11  
1642 LANGAN AVENUE  
PORT COQUITLAM B.C.  
V3C 1K5  
PHONE: 800 663-0854

# FIFTH WHEEL LOAD CELL

## HOLLAND

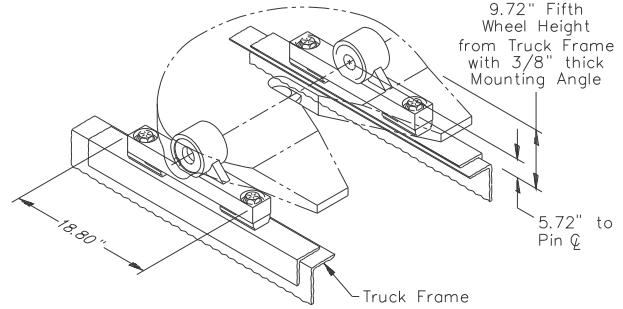


### FITS:

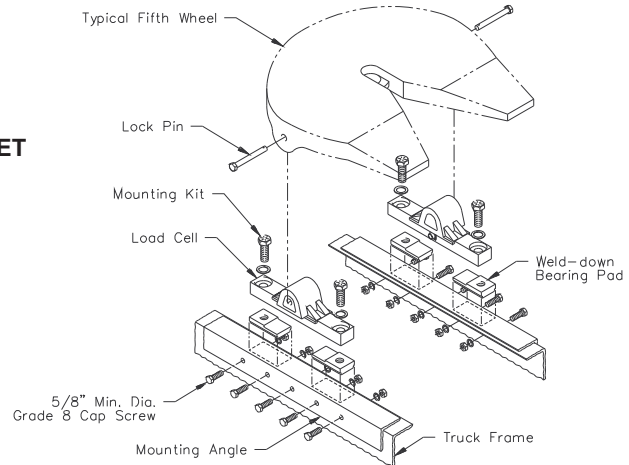
**STATIONARY 5th WHEELS** **FW 201** (WAS FW 2000)  
**FW 351** (WAS FW 3500)

**SLIDING 5th WHEELS** **FW 8** (TOP PLATE FOR FW 201)  
**FW 35** (TOP PLATE FOR FW 351)

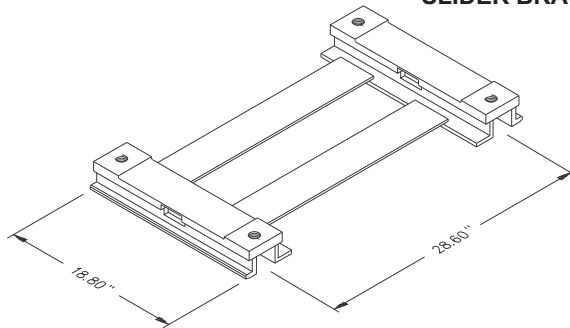
## FONTAINE



### FIXED MOUNT



## HOLLAND SLIDER BRACKET



A system consists of two Vulcan Fifth Wheel Double Shear Beam Load Cells and two Fifth Wheel Mounting Kits containing load cell mounting bolts and weld-down bearing pads. An optional slide bracket is available for a Holland sliding fifth wheel.

### SPECIFICATION : FIFTH WHEEL LOAD CELLS

**CAPACITY:** 40,000 lbs vertical load per system  
150,000 lbs system draw bar pull

**ACCURACY:** Typical system error less than  
.5% full scale

**MATERIAL:** High strength alloy steel

**OUTPUT:** 1.20mV/V at 20,000 lbs  
(each load cell)

**FINISH:** Vulcan load cells are cad/chromate  
plated for increased rust protection

### SPECIFICATION : HOLLAND SLIDER BRACKET

**CAPACITY:** 40,000 lbs vertical load per system  
150,000 lbs system draw bar pull

**MATERIAL:** Bearing plate is high strength alloy steel

**FINISH:** Vulcan slider brackets are painted  
for increased rust protection

## REPRESENTED BY: